

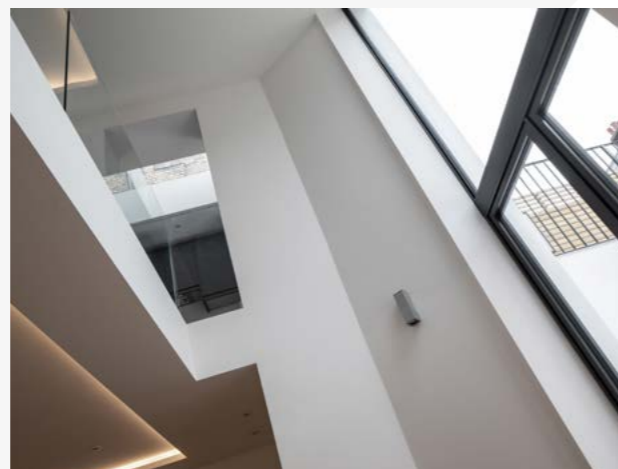
# GLENMORE ROAD, HAMPSTEAD



Refurbishment and basement extension of a Ground Floor flat near Belsize Park in North-West London

The Client owned this 85 sqm ground floor as an investment asset. Faced with the choice of whether to sell and buy a bigger property or extend and improve, they chose the latter.

The project was fulfilled on a very tight budget and required a lot of innovative thinking. The resulting 160 sqm maisonette now comprises three bedrooms (one of them en-suite), two bathrooms, a guest WC, ample living/dining space across both levels, utility room and storage.



"The feeling of openness has been achieved by introduction of a double-height space facing the rear garden, stepping down to the lower-ground level."



The feeling of openness has been achieved by introduction of a double-height space facing the rear garden, stepping down to the lower-ground level. The kitchen has received a 4m long skylight above its entire length. The rear façade, featuring a subtly detailed double-height slim-glazed opening, maintains the appearance of the building in the conservation area.

➡ AR Architecture | Commercial • Hospitality • Residential

Hampstead Old Town Hall, 213 Haverstock Hill,  
London NW3 4QP

T +44 (0) 207 209 2851 | W [www.ar-arch.co.uk](http://www.ar-arch.co.uk)  
E [info@ar-arch.co.uk](mailto:info@ar-arch.co.uk)